



ABBOT'S WAY
SCHOOL

EXPLORE | DISCOVER | THRIVE

“Inspirational learning with a difference”

SAFEGUARDING AND CHILD PROTECTION POLICY

Effective Date:	August 2023
Review Date:	August 2024
Version:	6
Reviewed:	Gareth Wright / Hellen Papworth

Abbot's Way School

Child Protection and Safeguarding Policy

Contents

Associated Documents	- 5 -
Purpose	- 5 -
Scope	- 6 -
Definitions	- 6 -
Contact Details	- 9 -
Mission Statement	- 11 -
Implementation, Monitoring and Review of the Safeguarding Policy	- 11 -
Statutory Framework	- 12 -
Roles and Responsibilities	- 12 -
The Designated Safeguarding Lead (DSL)	- 12 -
Responsibilities of the Designated Safeguarding Lead (DSL)	- 13 -
Training	- 14 -
Raising Awareness	- 15 -
The Advisory Governing Body	- 16 -
Supporting Children	- 17 -
Emergency Contacts for Children	- 18 -
Mental and Emotional Health of Children	- 19 -
Local Issues and Contextual Safeguarding	- 19 -
Dealing with a Disclosure	- 19 -
Record Keeping	- 20 -
Confidentiality	- 21 -
Procedure	- 22 -
Communication with Parents	- 23 -
Allegations involving Staff/Volunteers	- 23 -
Safer Working Practice	- 25 -
Site Security including Internet Use	- 25 -
Images and Photography	- 26 -

Keeping Children Safe in Education (September 2023)	- 27 -
APPENDICES	- 28 -
Appendix A – Types of Abuse	- 28 -
Physical abuse	- 28 -
Emotional abuse	- 28 -
Sexual abuse	- 28 -
Neglect	- 29 -
Specific abuse and Vulnerability Concerns	- 29 -
Domestic abuse	- 29 -
Fabricated or Induced Illness by Carer (FI)	- 30 -
Child Exploitation, Sexual (CSE) and gangs, (also known as Child Criminal Exploitation)	- 31 -
Child on Child Abuse	- 32 -
Honour-Based Violence (HBV)	- 33 -
Female Genital Mutilation (FGM)	- 34 -
Forced Marriage (FM)	- 34 -
Breast Ironing/Binding	- 35 -
Faith Abuse	- 31 -
Extremism and Radicalisation	- 35 -
Historical Abuse	- 36 -
County Lines, Cross Borders, Gangs, Trafficking and Cuckooing	- 36 -
Private Fostering	- 36 -
Hate Crime	- 37 -
Sexting	- 38 -
UpSkirting	- 38 -
Online Abuse	- 38 -
Harmful Sexual Behaviour	- 39 -
Grooming	- 39 -
Missing Children	- 39 -
Children Missing Education (CME)	- 40 -
Children on Roll	- 41 -
Appendix B - Single Central Record (SCR)	- 41 -

Appendix C – Early Help	- 43 -
Appendix D	- 44 -
Managing Allegations and Escalation	- 44 -
Escalation	- 45 -
Appendix E – Referral Routes	- 46 -
SSCB referral routes - Somerset Safeguarding Children Board	- 46 -
Appendix F	- 47 -
Sample Letter	- 47 -
Appendix G	- 47 -
Prevent – Extremism and Radicalisation	- 47 -
Appendix H	- 49 -
Dangerous Drugs	- 49 -
Searching and Confiscation	- 49 -
Appendix I	- 49 -
Reasonable Force	- 49 -
Appendix J	- 50 -
Changing for PE	- 50 -
Appendix K	- 52 -
The SSCB	- 52 -
Appendix L	- 53 -
Intimate Care	- 53 -
Appendix M	- 53 -
Professional Conduct and Safety	- 53 -
Appendix N	- 53 -
Contextual Safeguarding	- 53 -
Appendix O	- 53 -
Useful Contacts	- 53 -
Appendix P	- 55 -
Key Points for Staff – Safeguarding and Child Protection in Practice	- 55 -
Appendix Q	- 57 -
Flow chart 1: Action taken when a child is referred to local authority children's social care services.	- 57 -

Flow Chart 2 – Immediate Protection
Appendix R – Body Map

- 58 -

- 59 -

Associated Documents

- Anti-Bullying Policy
- Attendance Policy
- E-Safety and multimedia Policy
- Complaints Policy
- Curriculum Policy
- Data Protection Policy
- Disciplinary Procedure
- Drugs, Alcohol and Tobacco Policy
- Employer Handbook
- Health & Safety Policy
- Induction pack for new staff and volunteers
- Management of Behaviour: Rewards and Sanctions Policy
- Off-Site Visits Policy
- Privacy Policy
- Recruitment and Selection Policy
- Runaway and Missing from Home, Care and Education (RMFHCE) Policy
- Safe Working (Caring) Practice Policy
- The Prevent Strategy
- Visitors Policy and procedures
- Staff Code of Conduct
- Whistle Blowing Policy

Purpose

Abbot's Way School is committed to safeguarding and promoting the welfare of children and requires all staff to act in the best interests of our young people at all times.

We will provide a safe and welcoming environment where every child and young person is respected and valued. It is the responsibility of everyone to be alert to the signs of abuse and harm in all its forms and to follow the procedures to ensure that children receive timely and effective support, protection and justice.

This Policy sets out the School's commitment to safeguarding, promoting the welfare of children and Keeping Children Safe in Education in line with the 2022 Statutory Framework.

The purpose of the policy is to provide a framework setting out how we will safeguard and promote students' welfare in accordance with our moral duty and

statutory guidance. The policy also informs parents and carers about how we will safeguard their children while they are in their care.

The school always considers "the best interests of the child."

Scope

This policy and associated statutory procedures applies to all Staff, Governors, Volunteers, Associates, Visitors and Parents/Carers of both current and prospective students in the School.

The policy and procedures are consistent with the locally agreed inter-agency procedure for Somerset Local Authority Local Safeguarding Partners.

This policy is available on the school website and is made available to all Staff, Governors, Volunteers, Parents/Carers (both current and prospective) and Visitors to the School.

Definitions

Child	Anyone who has not yet reached their 18th birthday. The fact that a child has reached 16 years of age, is living independently or is in further education, is a member of the armed forces, is in hospital or in custody in the secure estate, does not change his/her status or entitlements to services or protection.
Child Protection	is a part of safeguarding and promoting welfare. This refers to the activity that is undertaken to protect specific children who are suffering, or are likely to suffer, significant harm.
Child Abuse	A form of maltreatment of a child. Somebody may abuse or neglect a child by inflicting harm, or by failing to act to prevent harm. KCSIE defines four categories of abuse: emotional, physical, sexual and neglect.
Child in Need	A child who is unlikely to achieve or maintain a reasonable level of health or development, or whose health and development is likely to be significantly or further impaired, without the provision of services; or a child who is disabled.
DfE	Department for Education

DBS	Disclosure and Barring Service
LADO	Local Authority Designated Officer – officers from the local authority designated as being the primary point of liaison in the event of allegations of abuse being made against the Joint Heads or member of Advisory Governing Body.
Looked After Child	A child who is subject to a care order (interim or full care order) or who is voluntarily accommodated by the local authority.
DSL	Designated Safeguarding Lead – member of staff in school who leads on Safeguarding and Child Protection – both staff training and management of referrals. The DSL must be a Senior Leader.
FGM	Female Genital Mutilation
GDPR	General Data Protection Regulations
IT	Information Technology
KCSIE	Keeping Children Safe in Education
LA	Local Authority
LSP	Local Safeguarding Partner
NSPCC	National Society for the Protection of Cruelty to Children
Parent	Refers to birth parents and other adults in a parenting role, for example, step-parents, foster carers and adoptive parents
PoP	Child On Child
Safeguarding	<p>Defined as:</p> <ul style="list-style-type: none"> ● protecting children from maltreatment; ● preventing impairment of children's health or development; ● ensuring that children are growing up in circumstances consistent with the provision of safe and effective care; and

- taking action to enable all children to have the best life chances.

This includes all forms of maltreatment including Youth Produced Sexual Imagery, child on child abuse, cyber bullying and radicalisation.

SCR

Single Central Record

SEND

Special Education Needs and Disabilities

Social Care

Refers to Children's Services in the area where the child is resident

Staff

refers to all those working for or on behalf of Abbot's Way School, full time or part time, temporary or permanent, in either a paid or voluntary capacity.

TRA

Teaching Regulations Authority

UKCCIS

UK council for Child Internet Safety

WTSC

Working Together to Safeguard Children Dec 2023

Contact Details

School Contact Information		
Designated Safeguarding Lead		
Gareth Wright Joint Head	01458 397497 07796 616894	gareth@abbotsway.co.uk
Deputy Designated Safeguarding Leads		
Hellen Papworth Joint Head	01458 397497 07506 578039	Hellen@abbotsway.co.uk
Kirsty Haddleton	01458 397497	kirsty@abbotsway.co.uk
Safeguarding Governor (if the concern can't be managed by the joint heads)		
Helen Atkins		helen@abbotsway.co.uk
External Contact Details		
Somerset Safeguarding Children Partnership		
Somerset Direct	0300 123 2224 0845 345 9122	childrens@somerset.gov.uk https://www.somerset.gov.uk/education-and-families/report-a-child-at-risk/
Local Authority Designated Officer (LADO) for allegations against individuals who work with children		
LADO	0300 1232 224	sdinputters@somerset.gov.uk
FGM The Diversity Crime Unit	101	
LA Prevent Lead	01278 647466 (M-F 8-4) or 101	channelsw@avonandsomerset.pnn.police.uk
Police (Non-emergency)	101	101@somerset.pm.police.uk
Ofsted Safeguarding Children	08456 404046	whistleblowing@ofsted.gov.uk
DfE Dedicated telephone helpline and mailbox for non-emergency advice for Staff and Governors	020 7340 7264	Counter.extremism@education.gov.uk
NSPCC Whistleblowing Helpline	0800 028 0285	help@nspcc.org.uk
CEOP National Crime Agency	0370 496 7622	communication@nca.x.gsi.gov.uk

Abbot's Way School strictly adheres to the policies, procedures, guidance and protocols set out by Somerset Direct, www.somerset.gov.uk
Telephone: 0845 345 9122

Mission Statement

Abbot's Way School will:

- Establish and maintain an environment where school staff and volunteers feel safe, are encouraged to talk and are listened to when they have concerns about the safety and well-being of a child.
- Ensure children know that there are adults in the school whom they can approach if they are worried.
- Ensure that children, who have additional/unmet needs, are supported appropriately. This could include referral to Early Help services or specialist services if they are a child in need or have been / are at risk of being abused and neglected.
- Consider how children may be taught about safeguarding, including online safety, through teaching and learning opportunities, as part of providing a broad and balanced curriculum.

Staff members working with children are advised to maintain an attitude of 'it could happen here' where safeguarding is concerned. When concerned about the welfare of a child, staff members will always act in the interests of the child and develop a culture where Safeguarding is everyone's responsibility.

Implementation, Monitoring and Review of the Safeguarding Policy

This policy will be reviewed annually by the DSL and the Governing Body. It will be implemented through the school's induction and training programme, and as part of day-to-day practice.

Induction training paperwork will include:

- the School Policy,
- Keeping Children Safe in Education (KCSIE) (September 2023), part 1 and Annex A for all staff, and
- the Staff Code of Conduct (including Whistleblowing, Acceptable Use of IT, Pupil/Staff Relationships and Use of Social Media).

Compliance with the policy will be monitored by the Designated Safeguarding Lead and the Joint Heads, through staff performance measures and day to day practice.

Statutory Framework

To safeguard and promote the welfare of children, the setting will act in accordance with the following legislation and guidance:

- [The Children Act 1989, 2004 and 2006\(as amended 2018\)](#)
- [United Convention of the Rights of the Child 1991](#)
- [Data Protection Act](#)
- [Safeguarding Vulnerable Groups Act 2006](#)
- [The Education Act 2002 \(Section 175/157\)](#) which outlines that Local Authorities and School Governing Bodies have a responsibility to “ensure that their functions relating to the conduct of school are exercised with a view to safeguarding and promoting the welfare of children who are its pupils”.
- Somerset Safeguarding Children Board Inter-agency Child Protection and Safeguarding Children Procedures ([Effective Support for Children and Families](#))
- [Keeping Children Safe in Education](#) (DfE, September 2023)
- [Special educational needs and disability \(SEND\) code of practice: 0- 25 years. HM government 2014](#)
- [Section 26, The Counter Terrorism and Security Act 2015 \(PREVENT duty\)](#)
- [Female Genital Mutilation Act 2003 \(Section 74, Serious Crime Act 2015\)](#)
- [Early Years Foundation Stage 2017](#)
- [Sexual violence and sexual harassment between children in schools and colleges; DfE May 2018.](#)
- [The Prevent Duty 2015](#)

Roles and Responsibilities

The Designated Safeguarding Lead (DSL)

The proprietor's and Governing Body have ensured that there is a designated person, **Mr Gareth Wright**, as an appropriate senior member of staff, to take lead responsibility for safeguarding.

He has the status and authority within the school to carry out the duties of the post including committing resources and, where appropriate, supporting and directing other staff (a member of senior management).

During term time the designated safeguarding lead or a deputy will always be available (during provision hours) for staff or other professionals to discuss any safeguarding concerns.

Individual arrangements for out of hours/out of term will be made available to ensure contact if needed.

Responsibilities of the Designated Safeguarding Lead (DSL)

- The DSL will refer all cases of suspected abuse or neglect to the Local Authority Children's Services (Safeguarding and Specialist Services) and/or Police (cases where a crime may have been committed) or to the Channel programme where there is a radicalisation concern.
- Liaise with the Joint Head to inform her of issues - especially ongoing enquiries under Section 47 of the Children Act 1989 and police investigations.
- Liaise with staff where and when appropriate.
- Act as a source of support, advice and expertise to staff on matters of safety and safeguarding and when deciding whether to make a referral by liaising with relevant agencies.
- Support staff members around requests for involvement to other agencies.
- Share information with appropriate staff in relation to a child's Looked-After (CLA) legal status (whether they are looked after under voluntary arrangements with consent of parents or on an Interim Care Order or Care Order) and contact arrangements with birth parents or those with parental responsibility.
- Ensure they have details of the CLA's social worker and the name of the virtual school Head Teacher in the authority that looks after the child.
- Have good knowledge and attend meetings (or submit reports) to contribute to the planning for children who have Child in Need or Child Protection Plans.
- Utilise, implement, scrutinise and monitor the use of Early Help Assessments in the provision.
- Work with relevant staff in the provision to ensure the site is safe and secure.
- Ensure recording child safeguarding and child protection files are correctly drawn up and regularly reviewed to scrutinise any patterns or drift/outstanding actions.

- Ensure the education provision's Single Central Record is correct at all times and safe recruitment procedures are upheld.
- Ensure the provision's site security and risk assessments are maintained and completed to support staff and children feel safe.
- Ensure that the Recruitment and Selection Policy is updated and fully implemented. In the absence of the DSL, the DDSL (Ms Hellen Papworth – Joint Head) would take this lead.

Training

The Designated Safeguarding Lead will undergo the Local Authority's formal training every two years including safer recruitment and safety online. The Joint Head (pastoral lead) also attends termly HUB meetings to attain local information sharing of latest updates, guidance and procedures.

The Joint Head (Education) has undertaken Prevent (WRAP) awareness and disseminated this in addition to her DSL training.

The knowledge and skills of all staff will be refreshed (for example via e-bulletins, staff meetings with DSLs, or taking time to digest safeguarding developments with the LSB and NSPCC which contains all the latest guidance) at least annually.

All staff will read and confirm that they have read any new or updated guidance and that declaration will be recorded on the My Concern staff log and a note placed on the Single Central Register (SCR).

Other requirements are:

- Understand the assessment process for providing early help and intervention, for example through locally agreed common and shared assessment processes such as early help assessments. (EHA)
- Understand the reporting process and key indicators for reporting child on child abuse, sexual harmful behaviour including child on child sexual violence.
- Have a working knowledge of how local authorities conduct a child protection case conference and a child protection review conference and be able to attend and contribute to these effectively when required to do so.

- Ensure each member of staff has access to and understands the school's safeguarding and child protection policy and procedures, especially new and part time staff.
- Be alert to the specific needs of children in need, those with special educational needs and young carers.
- Understand and support the school with regards to the requirements of the Prevent duty and are able to provide advice and support to staff on protecting children from the risk of radicalisation.
- Be able to keep detailed, accurate, secure written records of concerns and referrals with actions and outcomes.
- Obtain/disseminate access to resources and attend any relevant or refresher training courses.
- Encourage a culture of listening to children and taking account of their wishes and feelings, among all staff, in any measures the school may put in place to protect them.
- Deliver any updates via whole or departmental staff meetings as and when required.

Raising Awareness

The **Designated Safeguarding Lead** ensures that the school's policies are known, understood and used appropriately, as well as:

- Ensuring the school's safeguarding and child protection policy is reviewed annually and the procedures and implementation are updated and reviewed regularly, and work with the Advisory Governing Body regarding this.
- Ensuring the safeguarding and child protection policy is available publicly and parents are aware of the fact that referrals about suspected abuse or neglect may be made and the role of the school in this.
- Linking with the **Somerset Safeguarding Children's Board** (SSCB) to make sure staff are aware of training opportunities and the latest local policies on safeguarding.

- Where children leave the school, ensuring the file for safeguarding and any child protection information is sent to any new school /college as soon as possible but transferred separately from the main pupil file. The school will obtain proof that the new school/education setting has received the safeguarding file for any child transferring and then destroy any information held on the child in line with data protection guidelines.

The Advisory Governing Body

The Advisory Governing Body will ensure that they comply with their duties under legislation. They will also have regard to this guidance to ensure that the policies, procedures and training in the provision are effective and comply with the law at all times.

There is a nominated person on the Advisory Governing Body whose role is to ensure the quality of safeguarding.

Safeguarding is discussed at every meeting. Additionally, the DSL/DDSLs (Joint Heads) and nominated Advisory Governing Body member will meet at the start of the academic year to ratify the new Safeguarding Policy. If there are any updates to the policy, it will be sent out by email to the Governing Body prior to the next meeting for ratification.

The responsibilities placed on the Governing Body include:

- Contributing to ensure the provision is carrying out inter-agency working, which includes providing a coordinated offer of early help when additional needs of children are identified.
- Ensuring that an effective safeguarding policy is in place, together with a staff behaviour code of conduct policy.
- Ensuring staff are provided with Part One of Keeping Children Safe in Education (DfE 2023) and Annex A and are aware of specific safeguarding issues.
- Ensuring that staff induction is in place with regards to child protection and safeguarding.
- Appointing an appropriate senior member of staff to act as the Designated Safeguarding Lead.

- Ensuring that all of the DSLs undergo formal child protection training every two years (in line with SCSB guidance) and receive regular (annual) safeguarding refreshers (for example via e-bulletins, meeting other DSLs, or taking time to read and digest safeguarding developments).
- Prioritising the welfare of children and young people and creating a culture where staff are confident to challenge senior leaders over any safeguarding concerns.
- Ensuring that children are taught about safeguarding in an age-appropriate way.
- Ensuring appropriate filters and appropriate monitoring systems are in place to safeguard children from potentially harmful and inappropriate online material. Having a senior board level lead to take leadership responsibility for the organisation's safeguarding arrangements.
- Ensure scrutiny and effectiveness of the single central record and child protection recording is undertaken.
- Ensure safeguarding is discussed and outcomes recorded at Governing Body meetings.
- Ensure the requirements of The Governors Safeguarding Audit Section 175 are met.

Supporting Children

Safeguarding and promoting the welfare of children is everyone's responsibility.

In order to fulfil this responsibility effectively, all professionals will make sure their approach is child-centred. This means that they will consider, at all times, what is in the best interests of the child.

Education providers and staff form part of the wider safeguarding system for children. This system is based on the principle of providing help for families to stay together where it is safe for the children to do so, and looking at alternatives where it is not, whilst acting in the best interests of the child at all times.

Children who may require early help will be offered early intervention through Early Help support services for families.

A directory of early help services is available from the Early Help Advice Hub on 01823 355803.

Somerset Choices and Professional Choices will also help practitioners and families find information and support to prevent escalation of needs and crisis.

Staff will be aware of the early help process, and understand their role in identifying emerging problems, sharing information with other professionals to support early identification and assessment of a child's needs.

It is important for children to receive the right help at the right time to address risks and prevent issues escalating. This also includes staff monitoring the situation and feeding back to the DSL/DDSLs any ongoing/escalating concerns so that consideration can be given to a request for involvement to Children's Services if the child's situation does not appear to be improving.

Staff working within the provision will also be alert to the potential need for early help for children also who are more vulnerable.

For example:

- Children with a disability and/or specific additional needs,
- Children with special educational needs,
- Children who are acting as a young carer,
- Children who are showing signs of engaging in anti-social or criminal behaviour especially if there is a concern that it is exploitative,
- Children missing education,
- Children whose family circumstances present challenges, such as substance abuse, adult mental health or learning disability, domestic violence,
- Children who are showing early signs of abuse and/or neglect.

Staff members will be aware of the main categories of maltreatment: physical abuse, emotional abuse, sexual abuse and neglect.

They will also be aware of the indicators of maltreatment and specific safeguarding issues so that they are able to identify cases of children who may be in need of help or protection.

(See Appendix A for information on further descriptors of abuse and specific safeguarding issues).

Emergency Contacts for Children

Keeping Children Safe in Education (2023) says that provisions will have at least **two** emergency contacts for every child in the school in case of emergencies, and in case there are welfare concerns at the home.

We will endeavour to maintain at least two contact numbers for every child on roll.

Mental and Emotional Health of Children

It is widely recognised that a child's emotional health and wellbeing influences their cognitive development and learning as well as their physical and social health and their mental wellbeing in adulthood.

Our setting will offer clear support and guidance for children.

[https://www.gov.uk/government/uploads/system/uploads/attachment_data/file/414908/Final EHWB draft 20 03 15.pdf](https://www.gov.uk/government/uploads/system/uploads/attachment_data/file/414908/Final_EHWB_draft_20_03_15.pdf)

Local Issues and Contextual Safeguarding

Safeguarding incidents can be associated with factors outside the setting and between children outside of school. This is called **contextual safeguarding**.

Our staff are aware of the definition of contextual safeguarding when reporting concerns and must ensure all information and background detail will be given to the DSL when discussing concerns.

We are aware in Somerset there are many local issues that can impact on the safeguarding of children, we will endeavour to be aware of all local issues around the provision and work with children to ensure they are safe.

Where available we will attend ONE meetings (One Teams Somerset), Team Around the Schools (TAS) and EYS groups to share knowledge.

Dealing with a Disclosure

If a child discloses that he or she has been abused in some way, the member of staff or volunteer will:

- Listen to what is being said without displaying shock or disbelief,
- Accept what is being said,
- Allow the child to talk freely,
- Reassure the child, but not make promises which it might not be possible to keep,
- Never promise a child that they will not tell anyone - as this may ultimately not be in the best interests of the child,
- Reassure him or her that what has happened is not his or her fault,
- Stress that it was the right thing to tell,
- Listen, only asking questions when necessary to clarify,

- Explain what has to be done next and who has to be told,
- Make a written record (see *Record Keeping*),
- Pass the information to the Designated Safeguarding Lead or DDSL without delay or a referral can be made directly if a child is at risk.

Note: Staff do not require parental consent for referrals to statutory authorities

Dealing with a disclosure from a child, and safeguarding issues can be stressful. The member of staff/volunteer will, therefore, consider seeking support for him/herself and discuss this with the Designated Safeguarding Lead.

If a staff member receives a disclosure about potential harm caused by another staff member, they will refer to– **Allegation involving school staff.**

Record Keeping

All concerns, discussions and decisions made and the reasons for those decisions will be recorded in writing. If in doubt about recording requirements staff will discuss with the designated safeguarding lead.

When a child has made a disclosure, the member of staff/volunteer will:

- Record as soon as possible after the conversation.
- Use the school welfare concern sheet wherever possible. (*Pro-forma available on the school drive*).
- Do not destroy the original notes in case they are needed by a Court.
- Record the date, time, witness, place and any noticeable non-verbal behaviour and the words used by the child.
- Indicate the position of any injuries.
- Record statements and observations rather than interpretations or assumptions.
-

All records need to be given to the Designated Safeguarding Lead promptly. No copies will be retained by the member of staff or volunteer.

The Designated Safeguarding Lead will ensure that all safeguarding records are managed in accordance with the [Education \(Pupil Information\) \(England\) Regulations 2005](#).

If a pupil who is/or has been the subject of a child protection plan changes provision, the Designated Safeguarding Lead will inform the social worker responsible for the case and transfer the appropriate records to the Designated Safeguarding Lead at the receiving provision in a secure manner, and separate from the child's academic file.

All child protection recordings will be scrutinised regularly to ensure the action and outcome have been carried out and any drift avoided.

A copy of safeguarding records will be retained by the last school attended. The long-term security of relevant safeguarding documents and related correspondence is crucial should allegations of abuse arise. All such documents must be securely retained from the date of birth of the student plus 50 years. The following information will be retained for a minimum of 50 years:

- A copy of Safeguarding Policies and revisions thereof.
- Records of safeguarding training.
- Records of abuse allegations or incidents including notification to the appropriate authorities.
- Copies of relevant information and accompanying correspondence relating to abuse of students whilst in your care.
- Copies of your historical public liability insurance policies.

Confidentiality

Safeguarding and protecting children raises issues of confidentiality that must be clearly understood by all staff/volunteers in education.

All staff, both teaching and non-teaching staff, have a responsibility to share relevant information about the protection of children with other professionals, particularly the investigative agencies (Children's Services: Safeguarding and Specialist Services and the Police).

If a child confides in a member of staff and requests that the information is kept secret, it is important that the member of staff tells the child in a manner appropriate to the child's age/stage of development that they cannot promise complete confidentiality: instead they must explain that they may need to pass information to other professionals to help keep the child or other children safe. This may ultimately not be in the best interests of the child.

Staff who receive information about children and their families in the course of their work will share that information only within appropriate professional contexts.

Procedure

When a member of staff is concerned about a child, he or she will inform the DSL or a Deputy DSL.

The Designated Safeguarding Lead will decide whether the concerns will be referred to Children's Services. If it is decided to make a request for involvement to Children's Services, this will be discussed with the parents, unless to do so would place the child at further risk of harm.

While it is the DSL's role to make request for involvement, any staff member can make a referral to Children's Services.

If a child is in immediate danger or is at risk of harm (e.g. concern that a family might have plans to carry out Female Genital Mutilation), a referral will be made to Children's Services and/or the Police immediately.

Where referrals are not made by the DSL, a Deputy DSL must be informed as soon as possible.

When a person is employed or engaged to carry out 'teaching' work in England, in the course of their work, discovers that an act of Female Genital Mutilation (FGM) appears to have been carried out on a girl under the age of 18 the teacher must report this to the police.

This is a mandatory reporting duty. See **Keeping Children Safe in Education (DfE September 2023): Annex A** for further details.

The member of staff must record information regarding the concerns on the same day. The record must be a clear, precise, factual account of the observations.

Particular attention must also be paid to the attendance and development of any child about whom the school has concerns, or who has been identified as being the subject of a child protection plan and a written record will be kept and attendance procedures followed.

If a pupil who is/or has been the subject of a child protection plan changes school, the Designated Safeguarding Lead will inform the social worker responsible for the case and transfer the appropriate records to the DSL at the receiving school, in a secure manner, and separate from the child's academic file.

The DSL is responsible for making the Senior Leadership Team aware of trends in behaviour or concerns that may affect pupil welfare. Gathering safeguarding data

and impact will be embedded into the provision's process to measure effective safeguarding practice and resolve any weaknesses.

Communication with Parents

The school will ensure the Safeguarding and Child Protection Policy is available publicly either via the provision website or by other means.

Parents will be informed prior to referral, unless it is considered to do so might place the child at increased risk of significant harm by:

- The behavioural response it prompts e.g. a child being subjected to abuse, maltreatment or threats / forced to remain silent if alleged abuser is informed.
- Leading to an unreasonable delay.
- Leading to the risk of loss of evidential material.
-

(The school may also consider not informing parent(s) where it would place a member of staff at risk).

The school will ensure that parents/carers have an understanding of the responsibilities placed on the school and staff for safeguarding children.

Allegations involving Staff/Volunteers

An allegation is any information which indicates that a member of staff may have:

- Behaved in a way that has or may have harmed a child.
- Possibly committed a criminal offence against/related to a child.
- Behaved towards a child or children in a way which indicates s/he would pose a risk of harm if they work regularly or closely with children.

This applies to any child the member of staff has contact within their personal, professional or community life.

All staff and volunteers are able to raise concerns about poor or unsafe practice and potential failures in the school or education setting's safeguarding arrangements.

Appropriate whistleblowing procedures, which are suitably reflected in staff training and staff behaviour policies, are in place and easily accessed for such concerns to be raised with the school's senior leadership team.

If staff members have concerns about another staff member then this will be referred to the Joint Heads. Where there are concerns about the Joint Head/s, this will be referred to the Governing Body, Abbot's Way School.

In the event of allegations of abuse being made against the Joint Head/s and the staff member feels unable to raise an issue with their employer or feels that their genuine concerns are not being addressed, allegations will be reported directly to the Local Authority Designated Officer (LADO) sdinputters@somerset.gov.uk

Staff may consider discussing any concerns with the Designated Safeguarding Lead if appropriate and make any referral via them. *(See Keeping Children Safe in Education: Part Four, DfE September 2023 for further information).*

The person to whom an allegation is first reported, will take the matter seriously and keep an open mind. She/he should not investigate or ask leading questions if seeking clarification; it is important not to make assumptions.

Confidentiality will not be promised and the person will be advised that the concern will be shared on a 'need to know' basis only.

Actions to be taken include making an immediate written record of the allegation using the informant's words – including time, date and place where the alleged incident took place, brief details of what happened, what was said and who was present. This record will be signed, dated and immediately passed on to one of the Joint Heads.

The recipient of an allegation must not unilaterally determine its validity, and failure to report it in accordance with procedures is a potential disciplinary matter.

The Joint Heads will not investigate the allegation itself, or take written or detailed statements, but will assess whether it is necessary to refer the concern to the Local Authority Designated Officer:

- If the allegation meets any of the three criteria set out at the start of this section, contact will always be made with the Local Authority Designated Officer without delay.
- If it is decided that the allegation meets the threshold for safeguarding, this will take place in accordance with Somerset Safeguarding Children Board Inter-agency Child Protection and Safeguarding Children Procedures.
- If it is decided that the allegation does not meet the threshold for safeguarding, it will be handed back to the employer for consideration via the school's internal procedures.

The Joint Heads will as soon as possible, following briefing from the Local Authority Designated Officer, inform the subject of the allegation.

For further information see: [SSCB's Allegations Management](#) or contact Somerset Direct for a referral to the LADO - Somerset Direct 0300 123 2224.

Where a staff member feels unable to raise an issue with their employer/through the whistleblowing procedure or feels that their genuine concerns are not being addressed, other whistleblowing channels are open to them.

NSPCC Whistleblowing Helpline is available for those who do not feel able to raise concerns regarding child protection failures internally.

Staff can call: 0800 028 0285, line is available from 8:00 AM to 8:00 PM, Monday to Friday and Email: help@nspcc.org.uk

Safer Working Practice

To reduce the risk of allegations, all staff will be aware of safer working practice and will be familiar with the guidance contained in the Employer Handbook; Staff Code of Conduct and Safer Recruitment document - [Guidance for safer working practice for those working with children and young people in education settings \(2019\)](#) and [Addendum April 2020](#).

The document seeks to ensure that the responsibilities of school leaders towards children and staff are discharged by raising awareness of illegal, unsafe, unprofessional and unwise behaviour.

This includes guidelines for staff on positive behaviour management in line with the ban on corporal punishment ([School Standards and Framework Act 1998](#)).

Site Security including Internet Use

The school will make reasonable effort to provide a secure, healthy, hazard-free environment for everyone at and visiting our school.

Consequently, all staff will:

- Maintain suitable/reasonable physical boundaries and barriers such as fencing, gates and locks on doors.
- Directly supervise children at all times, ensuring they remain on the premises and are never permitted to enter hazardous or insecure section areas.

- Take all reasonable steps to monitor contractors, visitors and volunteers using the premises, requiring them to report to the provision office, take and read our Information and Guidance for Contractors and Visitors leaflet sign in to confirm that they have received, read and understood this leaflet, and wear a visitor's badge/sticker.
- Alert contractors, visitors and volunteers to the settings Safeguarding expectations and protocols, as well as advising them of the name of the DSL and Deputy DSLs.
- Update the single central record of staff/volunteers /casual/governance that are in regulated activity with children.
- Fire Drills, First Aid and Lockdown. We will have clear processes and scrutiny with clear records.
- Whilst filtering and monitoring are an important part of the online safety picture for schools and colleges to consider. Governors and proprietors will consider a whole school approach to online safety. This will include a clear policy on the use of mobile technology in the school.
- We will ensure that there is an on-line safety policy for our provision that will include the use of smart phone technology.

Our provision believes good safe security allows both staff and pupils to feel safe and confident in their surroundings and offers reassurance to parents and carers.

We note that clearly defined risk management of the site allows staff to manage the school site by limiting trespass and by channelling visitors to the site through appropriate entrances.

Images and Photography

The ICT and E-Safety Policy and procedures will be followed. The School will ensure that:

- Pictures will not be taken or posted without parental permission and only the Student's first name will be used with an image.
- Students will be appropriately dressed on and off site.

- Students are encouraged to tell if they are worried about any photographs that are being taken of them.
- Staff, Governors or Visitors inform the Joint Heads if they have any concerns about being in photographs associated with the School.
- Volunteers and visitors understand and adhere to the School's approach to the taking of photographs.

Keeping Children Safe in Education

The statutory guidance '[Keeping Children Safe in Education' \(September 2023\)](#) is available online. It is **essential** that all staff have access to this online document and read Part One and Annex A, which provides further information on:

- Children and the Court System,
- Children absent from Education,
- Children with family members in prison,
- Child Criminal Exploitation (CCE),
- Child Sexual Exploitation (CSE),
- County Lines,
- Domestic abuse,
- Homelessness,
- Honour-based violence,
- FGM mandatory reporting duty,
- Forced marriage,
- Preventing radicalisation,
- The Prevent duty,
- Channel,
- Peer-on-Peer abuse/child-on-child abuse,
- Sexual violence and sexual harassment between children in schools and colleges,
- Upskirting,
- The response to a report of sexual violence or sexual harassment.
- Safer recruitment
- School Filtering and Monitoring Systems

This is to assist staff to understand and discharge their role and responsibilities as set out in this guidance.

Our staff members and regular visitors are asked to sign to say they have read these sections and will subsequently be redirected to these online documents again should any changes occur.

APPENDICES

Appendix A – Types of Abuse

Physical abuse may involve hitting, shaking, throwing, poisoning, burning or scalding, drowning, suffocating, or otherwise causing physical harm to a child. Physical harm may also be caused when a parent or carer fabricates the symptoms of, or deliberately induces, illness in a child.

Emotional abuse is the persistent emotional maltreatment of a child such as to cause severe and persistent adverse effects on the child's emotional development.

It may involve conveying to a child that they are worthless or unloved, inadequate, or valued only insofar as they meet the needs of another person.

It may include not giving the child opportunities to express their views, deliberately silencing them or 'making fun' of what they say or how they communicate.

It may feature age or developmentally inappropriate expectations being imposed on children. These may include interactions that are beyond the child's developmental capability, as well as overprotection and limitation of exploration and learning, or preventing the child participating in normal social interaction.

It may involve seeing or hearing the ill-treatment of another. It may involve serious bullying (including cyber bullying), causing children frequently to feel frightened or in danger, or the exploitation or corruption of children.

Some level of emotional abuse is involved in all types of maltreatment of a child, though it may occur alone.

Sexual abuse involves forcing or enticing a child or young person to take part in sexual activities, not necessarily involving a high level of violence, whether or not the child is aware of what is happening.

The activities may involve physical contact, including assault by penetration (for example, rape or oral sex) or non-penetrative acts such as masturbation, kissing, rubbing and touching outside of clothing.

They may also include non-contact activities, such as involving children in looking at, or in the production of, sexual images, watching sexual activities, encouraging children to behave in sexually inappropriate ways, or grooming a child in preparation for abuse (including via the internet).

Sexual abuse is not solely perpetrated by adult males. Women can also commit acts of sexual abuse, as can other children.

Neglect is the persistent failure to meet a child's basic physical and/or psychological needs, likely to result in the serious impairment of the child's health or development. Neglect may occur during pregnancy as a result of maternal substance abuse.

Once a child is born, neglect may involve a parent or carer failing to provide adequate food, clothing and shelter (including exclusion from home or abandonment); failing to protect a child from physical and emotional harm or danger; failure to ensure adequate supervision (including the use of inadequate care-givers); or the failure to ensure access to appropriate medical care or treatment.

It may also include neglect of, or unresponsiveness to a child's basic emotional needs.

Specific abuse and Vulnerability Concerns

Domestic abuse may take many forms. Witnessing the physical and emotional suffering of a parent may cause considerable distress to children, and both the physical assaults and psychological abuse suffered by adult victims who experience domestic abuse can have a negative impact on their ability to look after their children.

Children can still suffer the effects of domestic abuse, even if they do not witness the incidents directly.

However, in up to 90% of incidents involving domestic violence where children reside in the home, the children are in the same or the next room. Children's exposure to parental conflict, even where violence is not present, can lead to serious anxiety and distress among children.

Children can see school as a safe retreat from problems at home or alternatively not attend school through a perceived need to be at home to protect abused parents or siblings.

Domestic abuse can therefore have a damaging effect on a child's health, educational attainment and emotional well-being and development. The potential scale of the impact on children is not always easy to assess, but may manifest itself as behavioural, emotional or social difficulties, including poor self-esteem, withdrawal, absenteeism, adult-child conflict.

Children sometimes disclose what is happening or may be reluctant to do so, hoping that someone will realise something is wrong.

Fabricated or Induced Illness by Carer (FI)

FI is a condition whereby a child suffers harm through the deliberate action of their carer and which is attributed by the adult to another cause.

FI can cause significant harm to children.

FI involves a well child being presented by a carer as ill or disabled, or an ill or disabled child being presented with a more significant problem than he or she has in reality and suffering harm as a consequence.

There are three main ways of the parent/carer fabricating or inducing illness in a child:

- Fabrication of signs and symptoms, including fabrication of past medical history.
- Fabrication of signs and symptoms and falsification of hospital charts, records, letters and documents, and specimens of bodily fluids.
- Induction of illness by a variety of means.

The possibility of fabricated and induced illness should be considered where there are discrepancies between professional and parental perceptions of the child's needs or of any illness or disability and where there is a possibility of significant harm to the child.

Where there are suspicions of FI in a child, the school's DSL must make a referral to Children's Social Care and/or the Police.

Parents should not be informed of suspicions at this stage.

Child Exploitation, Sexual (CSE) and gangs, (also known as Child Criminal Exploitation)

There will be other circumstances which give cause for serious concern about the welfare of children, such as Child Sexual Exploitation (CSE).

The exploitation of children and young people under 18 involves exploitative situations, contexts and relationships where young people (or a third person or persons) receive something (e.g. food, accommodation, drugs, alcohol, cigarettes, affections, gifts, money) as a result of them performing, and/or another or others performing on them, sexual activities.

CSE can occur through the use of technology without the child's immediate recognition; for example, being persuaded to post sexual images on the Internet/mobile phones.

In all cases, those exploiting the child/young person have power over them by virtue of their age, gender, intellect, physical strength and/or economic or other resources.

Violence, coercion and intimidation are common; involvement in exploitative relationships being characterised in the main by the child or young person's limited availability of choice resulting from their social/economic and/or emotional vulnerability.

The current definition updated March 2017 states:

Child sexual exploitation is a form of child sexual abuse. It occurs where an individual or group takes advantage of an imbalance of power to coerce, manipulate or deceive a child or young person under the age of 18 into sexual activity (a) in exchange for something the victim needs or wants, and/or (b) for the financial advantage or increased status of the perpetrator or facilitator. The victim may have been sexually exploited even if the sexual activity appears consensual.

Child sexual exploitation does not always involve physical contact; it can also occur through the use of technology.

Somerset's CSE screening tool can be found at:

<http://sscb.safeguardingsomerset.org.uk>

Child on Child Abuse

Child on Child including ([Harmful Sexual Behaviour, Sexual violence and Harassment in education May 2018](#))

Education settings are an important part of the inter-agency framework not only in terms of evaluating and referring concerns to children's services and the police, but also in the assessment and management of risk that the child or young person may pose to themselves and others in the education setting.

When considering whether behaviour is abusive, it is important to consider:

- Whether there is a large difference in power (for example age, size, ability, development) between the young people concerned; or
- whether the perpetrator has repeatedly tried to harm one or more other children; or
- where there are concerns about the intention of the alleged perpetrator.

Child on Child abuse can manifest itself in many ways and different gender issues can be prevalent.

Severe harm may be caused to children by abusive and bullying behaviour of other children, which may be physical, sexual or emotional and can include gender-based violence/ sexual assaults, sexting, teenage relationship abuse, peer-on-peer exploitation, serious youth violence, sexual bullying or harmful sexual behaviour.

Specific training is delivered to staff on **child-on-child abuse** and the procedures for reporting this.

Somerset County Council recommends that education settings use [The Sexual Behaviours Traffic Light Tool by the Brook Advisory Service](#) to help professionals assess and respond appropriately to sexualised behaviour.

Guidance on responding to and managing sexting incidents can be found at: <https://www.ceop.police.uk/safety-centre/>

Staff recognise that children are capable of abusing their peers and this will not be tolerated or passed off as "banter" or "part of growing up".

Banter can be used to threaten or demean other children.

Any allegations of Child on Child abuse will be investigated with the advice of the LSCB consultation line.

In order to minimise the risk of **Child on Child abuse**, the school will:

- Provide a developmentally appropriate PSHE curriculum which develops students' understanding of acceptable behaviour and keeping themselves safe.
- Have systems in place for any student to raise concerns with staff, knowing that they will be listened to, believed and valued.
- Develop robust risk assessments where appropriate.
- Have relevant policies in place (e.g. behaviour policy).

Dependent on the outcomes of a Child-on-Child abuse case, the school will provide necessary support and education for any victim and perpetrator.

[Sexual Violence and Sexual Harassment between Children in Schools and Colleges](#)

Honour-Based Violence (HBV)

So-called 'honour based' violence (HBV) encompasses crimes which have been committed to protect or defend the honour of the family and/or the community, including Female Genital Mutilation, Forced Marriage and practices such as breast ironing.

All forms of so-called HBV are abuse (regardless of the motivation) and will be handled and escalated as such. If in any doubt, staff will speak to the DSL.

Professionals in all agencies, and individuals and groups in relevant communities, need to be alert to the possibility of a child being at risk of HBV, or already having suffered HBV.

Female Genital Mutilation (FGM)

FGM comprises all procedures that involve partial or total removal of the external female genitalia, or other injury to the female genital organs for non-medical reasons (World Health Organisation).

It is also sometimes referred to as female genital cutting or female circumcision. The practice is illegal in the UK.

FGM is not an issue that can be decided on by personal preference – it is an illegal, extremely harmful practice, and a form of child abuse and violence against women and girls.

Professionals in health, social care and teaching have a statutory duty to report all cases of FGM to the Police where disclosure or signs of FGM are noted, or where a person knows or suspects FGM has been – or will be – perpetrated.

When someone reports FGM to the Police, they will ask for a crime reference number.

- If there is an IMMEDIATE RISK, call the Police on 999 (emergency number).
- If there is NOT an immediate risk, call the Police on 101 (non-emergency number).
-

Forced Marriage (FM)

The UK Government describes this as taking someone, usually overseas, to force them to marry (whether or not the FM takes place) or marrying someone who lacks the mental capacity to consent to the marriage (whether they're pressured to or not).

Breaching a Forced Marriage Protection Order is also a criminal offence. When a disclosure or signs of FM are noted, staff will always alert the Joint Heads immediately.

We should never attempt to intervene directly as a school or through a third party.

In such situations, the DSL will always call either Somerset Direct/Police and/or the Forced Marriage Unit on 020 7008 0151.

Breast Ironing/Binding

Breast ironing (also known as breast flattening) is the pounding and massaging of a pubescent girl's breasts, using hard or heated objects, to try to make them stop developing or to disappear.

When a disclosure or signs of breast ironing are noted, staff will always alert the DSL immediately.

Faith Abuse

Faith abuse is linked to a belief in witchcraft or possession by spirits and demons. In such instances, physical and/or psychological violence may be used in order to "get rid" of the possessing spirit.

Child abuse is never acceptable in any community, in any culture, in any religion, under any circumstances. This includes abuse that might arise through a belief in spirit possession or other spiritual or religious beliefs."

Faith abuse usually occurs in the household where the child lives. It may also occur in a place of worship where alleged "diagnosis" and "exorcism" may take place.

When a disclosure or signs of faith abuse are noted, staff will always alert the DSL immediately. In such situations, the DSL will always call Somerset Children's Social Care Emergency Duty Team on 0300 123 2224.

Extremism and Radicalisation

The UK Government defines extremism as:

"The vocal or active opposition to fundamental British values, including democracy, the rule of law, individual liberty and mutual respect and tolerance of different faiths and beliefs" and/or "calls for the death of members of our armed forces, whether in this country or overseas."

Radicalisation is defined by the UK Government within this context as: "The process by which a person comes to support terrorism and extremist ideologies associated with terrorist groups."

We take the "**Prevent**" duty seriously and recognise that Safeguarding against extremism and radicalisation is no different from Safeguarding against any other

vulnerability; it is about protecting children and young people from being groomed and exploited by others.

Historical Abuse

Historical abuse (also known as non-recent abuse) is an allegation of neglect, physical, sexual or emotional abuse made by or on behalf of someone who is now 18 years or over, relating to an incident which took place when the alleged victim was under 18 years old.

The Police will be informed about allegations of crime at the earliest opportunity. Any reports of historic abuse made to Avon and Somerset Police must be to the Safeguarding Co-ordination Unit 01823 349037.

County Lines, Cross Borders, Gangs, Trafficking and Cuckooing

These are police terms for urban gangs supplying drugs to suburban areas and market/or coastal towns using dedicated mobile or 'deal lines'.

Gangs use children and vulnerable people to move drugs and money. Often, they take over the homes of vulnerable adults and children by force or coercion in a practice referred to as cuckooing.

Getting involved in gang culture can have serious and potentially devastating consequences, with dealers/offenders/members not afraid to use violence. There are people themselves vulnerable and at risk of exploitation by gang members from outside the county.

Any activity that seems to be suspicious, or involve drug dealing/crime/exploitation will be passed to the police on 101.

If young people are thought to be involved, the early help assessment is a useful tool. A request for involvement to CSC/police is needed if the child is at immediate risk of harm.

[Criminal Exploitation of Children and Vulnerable Adults – County Lines](#)

Private Fostering

Private fostering is when a child under the age of 16 (18 if they are disabled) lives with someone who is not a close relative, guardian or person with parental responsibility for 28 days or more.

Private fostering **is not the same** as fostering arranged by the local authority.

Children and young people become privately fostered for a variety of reasons:

- Their parents live overseas and they come to this country to attend school.
- Their parents are ill and cannot look after them.
- Their parents work away from home, possibly abroad.
- Their parents have come to the UK to study or work and require someone to look after their children.
- They are teenagers who are estranged from their families.

The law says that the Local Authority must be told about all private fostering arrangements. The child's parents or carers should notify us of the arrangement, although anyone else involved in making the arrangement or who is aware of it, also has a responsibility to inform us.

The Children Act 1989, and section 44 of the Children Act 2004, outlines the legal duty of the local authority to make sure that the welfare of all privately fostered children is safeguarded and promoted.

A social worker will need to check the placement is suitable and that all the needs of the child or children are being met.

They will also speak to the child or children to make sure that a thorough assessment of the placement is carried out.

When we are made aware a child may be privately fostered a request for involvement will be made to Somerset Direct.

Hate Crime

A Hate Incident is any incident which the victim, or anyone else, thinks is based on someone's prejudice towards them because of their race, religion, sexual orientation, disability or because they are transgender.

If you, or anyone you know, has been called names, been bullied or had anything happen to them that you think may be because of one of these factors, then you should report this as a hate incident.

Not all hate incidents will amount to criminal offences, but those that do become hate crimes.

Sexting

Sexting is sending, receiving, or forwarding sexually explicit messages, photographs, or images, primarily between mobile phones.

It may also include the use of a computer or any digital device.

The provision will follow local procedures with police and Somerset Safeguarding Children's Board.

UpSkirting

The Voyeurism (Offences) Act, which is commonly known as the Upskirting Act, came into force on 12 April 2019.

'Upskirting' is where someone takes a picture under a person's clothing (not necessarily a skirt) without their permission and or knowledge, with the intention of viewing their genitals or buttocks (with or without underwear) to obtain sexual gratification, or cause the victim humiliation, distress or alarm. It is a criminal offence.

Anyone of any gender can be a victim.

Online Abuse

This type of abuse happens on the web, through social networks, playing online games or using a mobile phone.

Children and young people may experience cyberbullying, grooming, sexual abuse, sexual exploitation, or emotional abuse.

Children can be at risk of online abuse from people they know, as well as from strangers.

Online abuse may be part of abuse that is taking place in the real world (for example bullying or grooming). Or it may be that the abuse only happens online (for example persuading children to take part in sexual activity online).

Children can feel like there is no escape from online abuse – abusers can contact them at any time of the day or night, the abuse can come into safe places like their bedrooms, and images and videos can be stored and shared with other people. [eLIM](#) is part of Support Services for Education.

Support Services for Education provides a wide range of services to schools and other educational providers promoting educational excellence for all the children and young people of Somerset and beyond.

To find out more about what they can offer you please visit their website www.SupportServicesforEducation.co.uk

For more information regarding the Schools Filtering and Monitoring systems which are in place to keep students safe when in school, please see the schools Filtering and Monitoring Policy

Harmful Sexual Behaviour

Sexual behaviour between children is also considered harmful if one of the children is much older – particularly if there is more than two years' difference in age or if one of the children is pre-pubescent and the other isn't.

However, a younger child can abuse an older child, particularly if they have power over them – for example, if the older child is disabled.

If you're not sure whether a sexual behaviour is harmful find out about the signs, symptoms and effects of harmful sexual behaviour.

Grooming

Grooming is when someone builds an emotional connection with a child to gain their trust for the purposes of sexual abuse, sexual exploitation or trafficking.

Children and young people can be groomed online or face-to-face, by a stranger or by someone they know - for example a family member, friend or professional.

Groomers may be male or female. They could be any age.

Many children and young people don't understand that they have been groomed or that what has happened is abuse.

Missing Children

Anyone under the age of 18 years is to be considered "missing":

“if he/she is absent from his/her place of residence without authority to a degree or in circumstances where the absence causes concern for safety of the child or a danger to the public”.

This includes children and young people who have been forced to leave home and those whose whereabouts are unknown and those who feel they have had to leave home (rather than making a positive choice to do so).

High risks concerns include where:

- The responsible adult has no indication when the child is likely to return.
- The child develops a pattern of going missing repeatedly.
- The child's location is unknown, or reason for absence is unknown and there is cause for concern for the child because of their vulnerability.
- The child is at high risk of CSE/gangs.
- The child is pregnant or has a young child.
- The child has a history of suicidal thoughts or behaviours.
- The child is at risk of radicalisation.

Children Missing Education (CME)

Children missing Education (CME) are children of compulsory school age who:

- aren't on a school roll, and,
- aren't getting a suitable education other than at school.

For more information, refer to the Somerset's Children Missing in Education Policy.

When children abscond from, or on route to/from, school, unexpectedly going missing from their registered school or education provider, parents/carers must be informed immediately and the Police involved where appropriate.

When children who are NOT on holiday and/or whose reason for absence is unknown, the absence is recorded as unauthorised and the education provider makes good attempts to find the child.

Should the child not be found, the case will be referred following the Child Missing in Education process.

The CME referral process does NOT replace Safeguarding procedures for the reporting of Child Protection concerns, which must be observed at all times.

- Missing Children: MissingChildren@somerset.gov.uk
- Elective Home Education Team: EHETeam@somerset.gov.uk
- The Local Authority Designated Officer (LADO):
<https://sscb.safeguardingsomerset.org.uk/working-with-children/allegations-management/>
- Somerset Direct, 0845 345 9122 email: sdinputters@somerset.gov.uk

Children on Roll

Where there are children on roll but missing education through complex, refusal or medical need (including those cases open to education welfare service, health or SEN), they remain the school's responsibility for safeguarding and procedures will be put in place to monitor their wellbeing.

Should a child/parent refuse or be non-attending due to a court process for poor attendance the provision needs to escalate and monitor welfare.

Cases will be referred to The Team around the School who will consider support or escalation.

Appendix B - Single Central Record (SCR)

Keeping an accurate Single Central Record is a statutory requirement and an essential part of keeping children safe in education and forms part of the statutory guidance Keeping Children Safe in Education (KCSIE) (DfE 2023) which applies to all maintained schools and academies.

The SCR is covered by the statutory guidance included within KCSIE and is a requirement of the School Staffing Regulations (and Independent School Regulations for academies).

Guidance about what information is held on the SCR is outlined at paragraph 112 of the guidance.

	YES	NO	ACTION
Is a single central record (SCR) in place for all staff (including supply staff)?			
Does the SCR include all others who work regularly or intensively with children, including volunteers?			
Are all members of the proprietor body included on the SCR?			
Does the SCR indicate that identity checks have been carried out and by whom?			
Is there evidence on the SCR that all staff have been checked against the Barred List (previously Xxx)?			
Does the SCR record the date when the DBS and/or Barred List checks was carried out and who carried out the check?			
Does the SCR record that further overseas criminal checks have been undertaken as appropriate?			
Does the SCR record evidence that a Prohibition from Teaching check has been carried out on all teaching staff?			
Does the SCR record professional qualifications – where the qualification is a requirement of the job?			
Does the SCR record a check of “Right to Work” in the United Kingdom and suitability checks as appropriate?			
Have all relevant staff been asked to complete a declaration confirming that they are not disqualified in line with the Childcare Act 2006 and the (Disqualification) Regulations 2009?			
Is evidence of these checks included on the SCR?			
Have copies of documents used to verify identity, qualifications and Right to Work in the UK been retained in individual personnel files?			
Does the SCR evidence that checks in respect of Section 128 directions have been undertaken for persons taking part in the management of an independent school including an academy or free school?			

Appendix C – Early Help

"Early help means providing support as soon as a problem emerges, at any point in a child's life, from the foundation years, through to the teenage years".

Working Together to Safeguard Children, Dec 2023.

It is about working with children, young people and their families to identify and address problems before they escalate.

Early help includes services that are available to all families as well as services for more vulnerable families who need a greater level of support.

Effective early help means that:

- Parents and or care-givers feel supported to provide stable, consistent and appropriate care for their families.
- Children and young people achieve their education goals.
- Young people are equipped with the skills and attitudes to join the workforce and overcome barriers to employability.
- Children and young people achieve the best possible physical and mental health.
- Children and young people are safe and feel safe.

This is what we are working towards as a partnership in Somerset.

We want to have a consistent and collaborative early help offer for children, young people and families delivered jointly by all partners, giving the ability to offer the right help at the right time as soon as a problem emerges.

Early Help is everyone's responsibility.

We want children, families, communities and agencies to work together so that families are assisted to help themselves and are supported as soon as a need arises, thereby improving the overall wellbeing and quality of life of all Somerset children, young people and their families.

Providing the right information and advice to enable choice for families so they can be empowered to make positive changes themselves with tailored support where needed.

Helping families build protective factors and family resilience so that they have the skills, knowledge and ability to meet the children's needs and to prevent situations escalating.

The Early Help assessment is used to help practitioners gather and understand information about the strengths and needs, based on discussions with the family.

The holistic assessment identifies the most appropriate way to meet those needs. Practitioners in universal or targeted early help services can complete an early help assessment on their own or with the support of the Early Help Co-ordination Hub.

Early Help Advice Hub (EA Hub) – Advice Line: 01823 355803 (M-F, 9am – 4pm)

Appendix D

Managing Allegations and Escalation

The statutory guidance 'Keeping Children Safe in Education (2023)' states that governing bodies appoint a member of staff of the school's or college's leadership team to the role of Designated Safeguarding Lead (DSL).

All staff are instructed that any allegation be reported immediately to the DSL.

Written safeguarding procedures reflect this guidance.

On being advised of an allegation which meets the criteria, the DSL will contact the Local Authority Designated Officer (LADO) within 1 working day.
Phone Somerset Direct on 0300 123 2224 for a referral.

The LADO's role is to provide advice and guidance to organisations dealing with allegations, to liaise with the police and other agencies, and to monitor the progress of cases to ensure that they are dealt with as quickly as possible, consistent with a thorough and fair process.

All referrals will be made in the first instance by phone to Somerset Direct indicating that you wish to refer an allegation against an adult who works with children.

Please follow up all referrals using the LADO Reporting Form available on the [Somerset Children Safeguarding Board](#) site.

All allegations against staff are dealt with in accordance with 'Working Together 2023'. In addition, schools will have regard to Part 4 of the statutory guidance 'Keeping Children Safe in Education (Sept 2023).

Should the allegation be about the designated lead or a deputy lead, allegations will be passed to a higher level such as the Governing Body.

Escalation

When working with professionals from other agencies there will at times be differences of opinion with regards to how to respond to an identified concern about a child, young person or family.

Disagreements can be a sign of developing thinking, and the value of exchanging ideas from different perspectives will not be underestimated and is one of many benefits of partnership working.

Transparency, openness and a willingness to understand and respect individual and agency views are core aspects of a safe multi-agency / inter-agency working.

Good preparation, open lines of communication and planning by professionals who take responsibility for decision-making will ensure differences of view are kept to a minimum.

However, disagreements may disadvantage the child or family involved if they are not resolved constructively and in a timely manner.

Safeguarding and promoting the welfare of children is a responsibility shared by all agencies. If you feel that a professional or an agency is not acting in the best interests of the child, young person or family, you have a responsibility to respectfully challenge the professional or agency.

The Somerset Children Safeguarding Board or the SSE Education Safeguarding Advisor can provide further advice on this matter.

Appendix E – Referral Routes

SSCB referral routes - Somerset Safeguarding Children Board

The SSCB has a statutory duty to co-ordinate how agencies work together to safeguard and promote the well-being of children and young people in Somerset and to ensure the effectiveness of the safeguarding arrangements.

Report a child at risk If you are worried about a child or young person who could be in danger please contact:

- Children's Social Care on 0300 123 2224
- by email at childrens@somerset.gov.uk
- or the police

You can contact the police directly by dialling **101** and they will discuss with Children's Social Care what action will be taken.

In an emergency always contact the police by dialling **999**.

If you would like to speak to a social worker outside of office hours please phone the **Emergency Duty Team (EDT) on 0300 123 23 27**.

We will always deal with any calls in the strictest confidence.

If you suspect child abuse:

- Do listen to the child.
- Do take what the child says seriously.
- Do act quickly.
- Do share your worries with Children's Social Care, the police or the NSPCC - they are there to help you.
- Do continue to offer support to the child.

- Don't delay.
- Don't probe or push the child for explanations.
- Don't assume that someone else knows and will help the child. You must act.
- Don't be afraid to voice your concerns, the child may need urgent protection and help. **Safeguarding is everybody's business.**

Appendix F

Sample Letter

Copies of this policy and "Keeping Children Safe in Education (2023)" are kept within the staff room

ALL staff can "sign off" as read within a timeframe set by the DSL.

These policies **must be read** as part of induction and included within Safeguarding training.

Appendix G

Prevent – Extremism and Radicalisation

Radicalisation is defined as the process by which people come to support terrorism and extremism and, in some cases, to then participate in terrorist groups.

"Extremism is vocal or active opposition to fundamental British values, including democracy, the rule of law, individual liberty and mutual respect and tolerance of different faiths and beliefs. We also include in our definition of extremism calls for the death of members of our armed forces, whether in this country or overseas"

(HM Government Prevent Strategy 2011).

Prevent is one part of the United Kingdom's counter-terrorism strategy (CONTEST) and aims to stop people from being exposed to extreme ideologies and becoming radicalised.

The **CONTEST** strategy is divided up into four priority objectives:

1. Pursue – stop terrorist attacks.
2. Prepare – where we cannot stop an attack, mitigate its impact.
3. Protect – strengthen overall protection against terrorist attacks.
4. Prevent – stop people becoming terrorists and supporting violent extremism.

It is an approach that involves many agencies and communities, to safeguard people who may be at risk of radicalisation.

Since the publication of the Prevent Strategy, there has been an awareness of the specific need to safeguard children, young people and families from violent extremism.

There have been attempts to radicalise vulnerable children and young people to develop extreme views including views justifying political, religious, sexist or racist violence, or to steer them into a rigid and narrow ideology that is intolerant of diversity and leaves them vulnerable to future radicalisation.

Keeping children safe from these risks is a safeguarding matter and will be approached in the same way as safeguarding children from other risks.

Children to be protected from messages of all violent extremism.

To report concerns contact the Regional Police Prevent Team:

- Phone: 01179 455 53
- Email: channelsw@avonandsomerset.pnn.police.uk
- [SWCPP \(Safeguarding Children and Young people against Radicalisation and Violent Extremism\)](#)
- [Revised Prevent Duty guidance for England and Wales \(updated April 2019\)](#).

Appendix H

Dangerous Drugs

As part of the statutory duty on education providers to promote pupils' wellbeing, education has a clear role to play in preventing drug misuse as part of their pastoral responsibilities.

To support this, the Government's Drug Strategy 2010 ensures that education staff have the information, advice and power to:

- Provide accurate information on drugs and alcohol through education and targeted information, including via the [FRANK](#) service.
- Tackle problem behaviour in schools, with wider powers of search and confiscation.
- Work with local voluntary organisations, health partners, the police and others to prevent drug or alcohol misuse.
- Have a designated, senior member of staff with responsibility for the drug policy and all drug issues within the setting.
- Establish relationships with local children and young people's services, health services and voluntary sector organisations to ensure support is available to pupils affected by drug misuse (including parental drug or alcohol problems).

Searching and Confiscation

Advice on searching and confiscations can be found in [Screening, searching and confiscation: Advice for head teachers, staff and governing bodies](#).

Appendix I

Reasonable Force

What is reasonable force?

The term 'reasonable force' covers the broad range of actions used by most teachers at some point in their career that involve a degree of physical contact with pupils.

Force is usually used either to control or redirect.

This can range from guiding a pupil to safety by the arm through to more extreme circumstances such as breaking up a fight or where a student/s needs to be separated to prevent violence or injury.

As mentioned above, schools generally use force to control a pupil in these cases.

Staff are not trained to use physical intervention and it is not used by the school but '**Reasonable in the circumstances**' means using no more force than is needed to keep a child safe.

Control means either passive physical contact, such as standing between pupils or blocking a pupil's path.

[Use of Reasonable Force: Advice for Headteachers, Staff and Governing Bodies](#)

Appendix J

Changing for PE

There is no current legislation around safe PE changing practices in primary schools; it is up to individual schools to write their own guidelines.

These are some of the things that schools will take into consideration when deciding how to practically provide safe and appropriate changing facilities.

Clear guidelines are recommended because:

- getting changed can make some children feel vulnerable.
- getting changed can cause anxiety for some children.
- staff can feel unsure about PE changing supervision and how to ensure that both children and adults are safe.

Changing areas

We need to consider the following things when organising changing facilities for children.

Where possible, use designated single-gender changing rooms or areas.

Mixed gender changing areas are less appropriate as children get older and staff need to be sensitive to those who physically mature at a much earlier or later age than their peers.

In most circumstances, boys and girls will be changing in separate areas by the time they are aged 7/8.

Schools should make adequate and sensitive arrangements for changing which consider the needs of pupils with disabilities and children from different religions, beliefs and cultural backgrounds or gender identity.

Appendix K

The SSCB

The Somerset Safeguarding Children Board (SSCB) is the statutory, multi-agency partnership with responsibility for coordinating, monitoring and challenging all activity relating to safeguarding children and young people living in Somerset.

Safeguarding Children Boards were set up as a result of the 2004 Children Act and are regulated by that law.

The work of the SSCB is broad and varied but includes:

- Developing multi-agency policies and procedures for safeguarding.
- Participating in the strategic planning of children's services.
- Communicating the need to safeguard and promote the welfare of children to professionals and the public.
- Conducting Serious Case Reviews when a child dies or is seriously harmed and abuse or neglect is suspected.
- Ensuring procedures to ensure a coordinated response to unexpected child deaths.
- Collecting and analysing information about all child deaths that occur in the area to identify issues of concern.
- Providing multi-agency training and development to staff on safeguarding children.

The SSCB have developed a range of learning opportunities that have been informed by the Board's priorities, quality assurance activities and learning reviews, which aim to equip you in your tasks and enable you to work confidently alone and alongside others to keep children safe and promote their wellbeing.

These training opportunities and a wide variety of information, advice, tools and resources is located at: <https://sscb.safeguardingsomerset.org.uk/>

Appendix L

Intimate Care

There are times intimate care is needed and we will consider the needs of the pupil attending our provision and provide a separate policy following the guidelines below:

[Sexual Violence and Sexual Harassment between Children in Schools and Colleges](#)

Appendix M

Professional Conduct and Safety

Our staff, volunteers and visitors will be provided with clear guidance on professional behaviour and standards in the setting code of conduct.

Use of provided phones, smart technology, private email addresses etc will not be used to communicate with parents or children about school issues, it is advised social networks are protected and used professionally.

Appendix N

Contextual Safeguarding

"There is a need to widen our assessment of children's lives beyond the boundary of families to include potential risks posed within the wider community.

The value of us including environmental factors and the social relationships of children and young people within assessments, both early help and statutory intervention, will lead and support to safeguarding better reflecting the areas in which children and young people exist... on street, online and peer to peer."

For more information see <https://contextualsafeguarding.org.uk/>

Appendix O

Useful Contacts

- Consultation Line for Children's Safeguarding Leads', 0300 123 3078

- Somerset Direct (Children's and Adult's) 0300 123 2224
- CAMHS Telephone Advice Line (12.00pm to 2.00pm Monday to Friday)
- Mendip 01749 836561
- South Somerset 01935 384140
- West 01823 368368
- GPs and Lead Professionals (9.00am to 4.00pm Monday to Friday)
- Early Help Advice Hub 01823 355803
- Emergency Duty Team (EDT) 0300 123 2327
- getset Mendip 01458 833017
- getset Sedgemoor 01278 446771
- getset South Somerset 01935 848942
- getset Taunton and West Somerset 01823 322508 / 01643 700030
- Prevent – Regional Police Prevent Team 01179 455536/539
- Email: channelsw@avonandsomerset.pnn.police.uk
- LGBT - stonewall.org.uk
- Somerset Drug and Alcohol Service (SDAS) 0300 303 8788
- Somerset Integrated Domestic Abuse Service (SIDAS) 0800 694 9999
- Somerset Partnership Integrated Therapy Service 0303 033 3002 (9.00am to 12.00pm, Mon, Wed, Thurs, Fri)
- Somerset Support for Education (SSE)
<http://www.supportservicesforeducation.co.uk/>
- Somerset Direct
<http://www.somerset.gov.uk/childrens-services/safeguarding-children/report-a-child-at-risk/>

Appendix P

Key Points for Staff – Safeguarding and Child Protection in Practice

It is important to consider that someone who abuses a child could be a member of their immediate or extended family, a friend, a neighbour, a stranger to them, a member of staff or another young person in this establishment.

It is therefore essential to remain professional in our approach and objective in our judgement, and not make any assumptions because of our knowledge of the person(s) involved.

All members of staff (including agency staff, volunteers and students on placement) MUST adhere to the following procedures if they are worried that a child or young person may be being abused.

- √ **Immediately refer** any child protection concerns about a young person or member of staff, to Gareth Wright, Designated Safeguarding Lead (DSL), the joint Heads or another Designated Person, details of which are posted throughout this policy and on the School Website.
- √ If you are not satisfied with Gareth Wright's response, or you are unwilling or unable to report to Gareth Wright (DSL) for whatever reason, you should make a referral yourself by contacting Somerset Direct, email www.somerset.gov.uk Telephone: 0845 345 9122.
- √ If a young person chooses to confide in you, disclosing any form of abuse, you must listen attentively but not ask any leading questions. The child must tell their own story in their own time. Even what seems to be an unbelievable story must be listened to and acted upon.
- √ Record any key points, in writing, as soon as reasonably possible, using the child's own words and phrases, if possible. These notes must be kept as originals, timed, dated and signed, as they may be crucial to the protection of the well-being of the child, and could well be used as evidence in court. As soon as possible seek out Gareth Wright (DSL).
- √ If any physical injuries or bruising are noticed ask the child how they sustained the bruise, graze, scratch, bite or other mark on their body. All such marks or injuries, however caused, must be recorded and the document handed to Gareth Wright (DSL), with the child's explanation attached. Do not examine a

child beneath their clothing, ask any leading questions or conduct any further investigations.

- √ If a young person requests confidentiality, tell them that this cannot be promised and explain that staff have a responsibility to share information with those adults who will be able to help protect them from harm. Reassure the child that only staff who need to know about it will be told. This could result in the young person not continuing the conversation, in which case do not pursue the matter but record your concerns and hand it to Gareth Wright (DSL).
- √ Do not discuss information given in confidence outside the appropriate professional contexts. All documentation regarding the disclosure must be treated and marked as **STRICTLY CONFIDENTIAL** and must only be shared with others on a need-to-know basis.

If you have any concerns about practices in the school which you feel may put children at risk of abuse or serious harm you must raise these with a member of the Leadership Team.

If you are not satisfied with the way in which they are dealing with the situation you can speak directly to any one of the following:

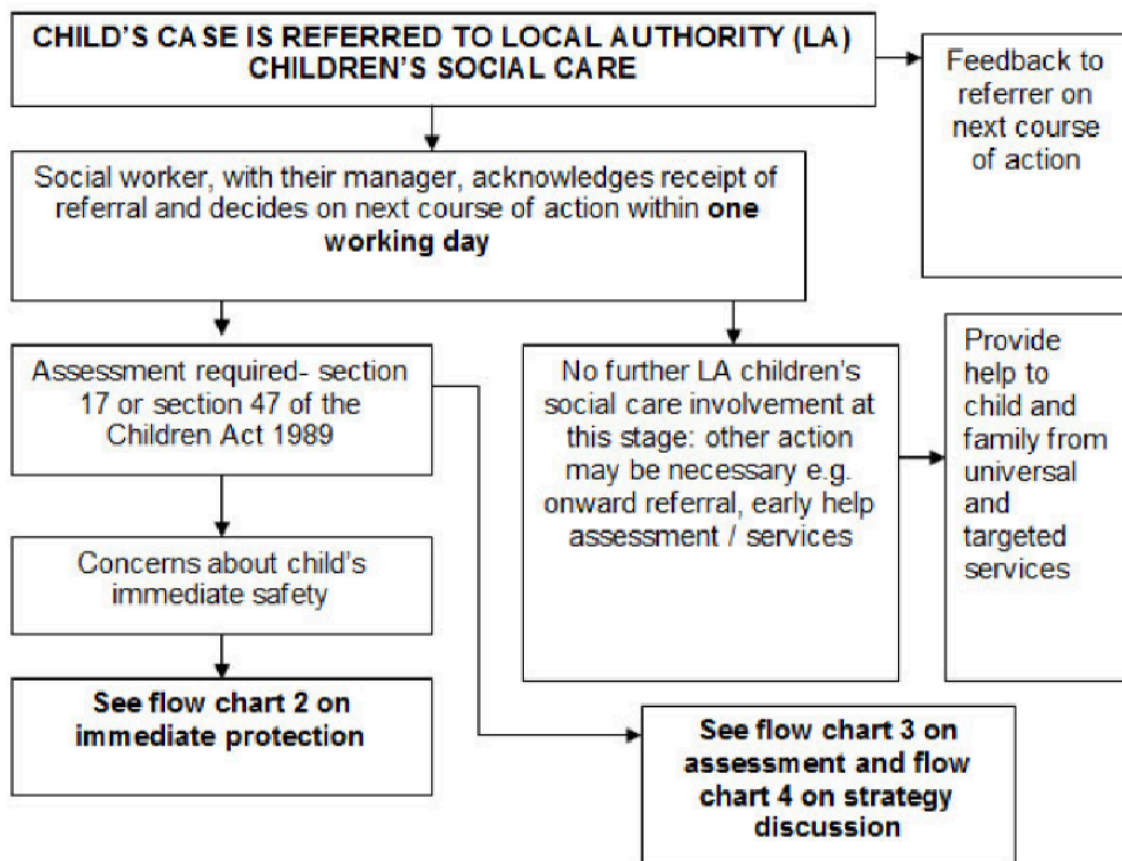
- Members of the Advisory Governing Body
- The Office for Standards in Education, Children's Services and Skills (Ofsted) at Piccadilly Gate, Store Street, Manchester, M1 2WD. Telephone 0300 123 1231

Failure to report actual or reasonably suspected physical, sexual or emotional abuse or neglect of a child is a disciplinary offence.

Appendix Q

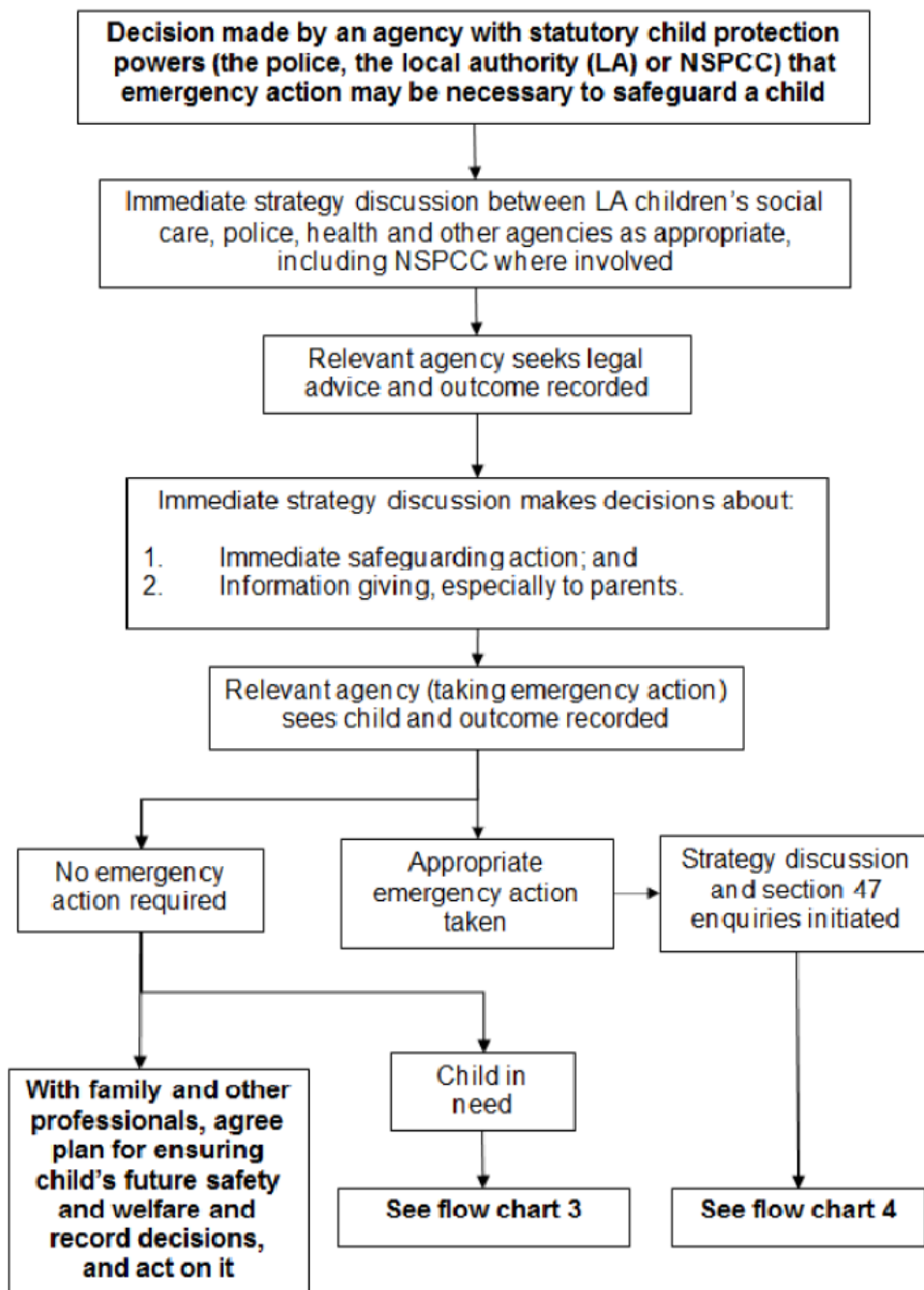
Source: Working together to safeguard children Dec 2023 - A guide to inter-agency working to safeguard and promote the welfare of children.

Flow chart 1: Action taken when a child is referred to local authority children's social care services.



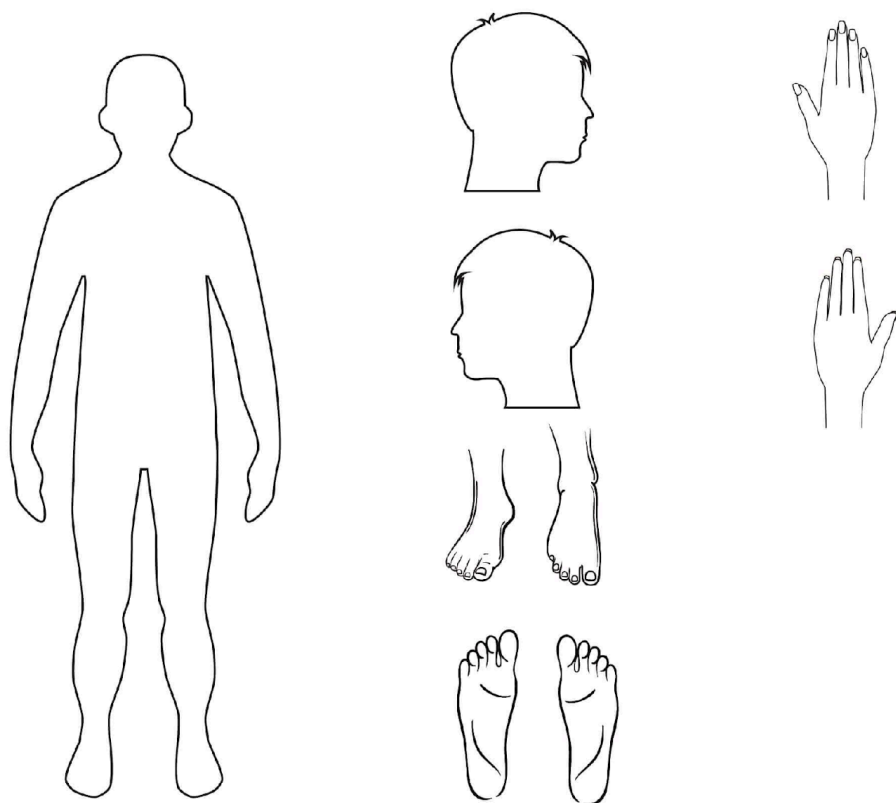
To see flow chart 3 on assessment and flow chart 4 on strategy discussion, please refer to pages 35 and 38 respectively of "[Working together to Safeguard Children Dec 2023](#)".

Flow Chart 2 – Immediate Protection



To see flow chart 3 on assessment and flow chart 4 on strategy discussion, please refer to pages 35 and 38 respectively of "[Working together to Safeguard Children Dec 2023](#)".

Appendix R – Body Map



Name Of Child
.....

Date Of Birth
.....

Name Of Worker
.....

Date Recorded
.....

Observations
.....
.....
.....